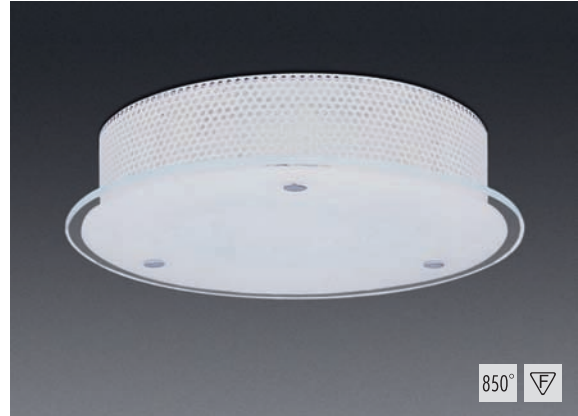


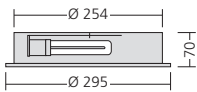
AB 250 – with frosted safety glass

Round surface mounted downlight for TC-DEL / TC-TEL and T16-R lamps

Flat round surface mounted downlight for TC-DEL / TC-TEL and T5-R lamps. Housing made of galvanised perforated sheet steel, powder-coated in RAL 9016 with structure. Suspended frosted glass accessory with 10 mm clear outer rim. Max. weight: 2,0 kg

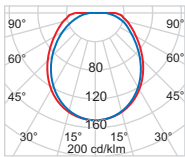


Version	High frequency ballast (HF)	Analogue dimmable HF ballast (1-10V)	Digital dimmable HF ballast (DALI)	Diameter	Height	Socket type
TC-DEL / TC-TEL 2 x 13 W	250.62.13.53	250.62.13.54		254 mm	70 mm	G24q
TC-DEL / TC-TEL 2 x 18 W	250.62.18.53	250.62.18.54		254 mm	70 mm	G24q
T16-R 22 W	250.61.22.53	250.61.22.54	250.61.22.56	254 mm	70 mm	2GX13

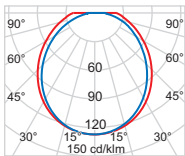


Attachments (Please order separately!)

Cover special colour **250.0090**



TC-DEL 2 x 13 W
Half-value angle 2 x 55°
Critical radiation angle/1000 cd/m² 90°
Light output ratio 49%



TC-DEL 2 x 18 W
Half-value angle 2 x 55°
Critical radiation angle/1000 cd/m² 90°
Light output ratio 42%