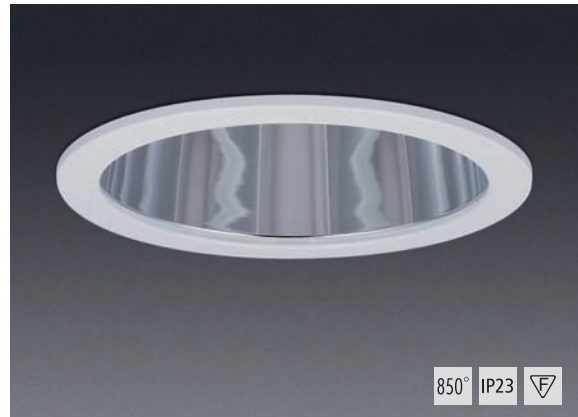




DL 255 eco

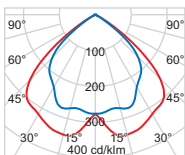
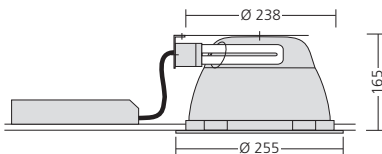
Round modular recessed downlight for 14 and 17 Watt TC-TEL lamps

Round modular recessed downlight for 14 and 17 Watt TC-TEL lamps. Die-cast ceiling trim, white powder-coated, adjustable without tools. Fixing of the bezel via bayonet lock. Exchangeable remote gear box prepared for 5-pole through wiring and with „twist & lock“ socket base. Housing made of galvanised sheet steel with quick-release mounting springs for ceiling plate thickness from 1-25 mm. Reflector made of high-polished vacuum metalised pure aluminium (Al99,98) for maximum LOR and iridescent-free colour rendering. Max. weight: 1,8 kg

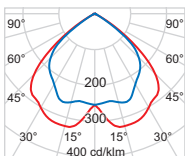


850° IP23

Version	High frequency ballast (HF)	Digital dimmable HF ballast (DALI)	Diameter	Ceiling cut-out	Recessed height	Socket type
TC-TEL 2 x 14 W	255.52.14.63	255.52.14.66	255 mm	238 mm	165 mm	GR14q
TC-TEL 2 x 17 W	255.52.17.63	255.52.17.66	255 mm	238 mm	165 mm	GR14q



TC-TEL 2 x 14 W
Half-value angle 2 x 50°
Shielding angle 31°
Critical radiation angle/1000 cd/m² 60°
Light output ratio 75%



TC-TEL 2 x 17 W
Half-value angle 2 x 51°
Shielding angle 31°
Critical radiation angle/1000 cd/m² 60°
Light output ratio 74%

Attachments (Please order separately!)

Panel sheet module 100	255.0320
Mineral fibre reinforcing plate	255.1320
Adjusting ring	255.2010
Plaster ring	255.2020
Ring for semi-recessed (25 mm)	255.2025
Concrete casting drum	255.2035
Emergency light kit 1h*	255.0901
Emergency light kit 3h*	255.0900
Ceiling trim chrome	255.3020
Ceiling trim fine steel optic	255.3220
Ceiling trim special colour	255.3090

* LED supplied loose and is only on request assembled to luminaire.

Decor attachment (You will find a detailed decor attachment description on pages 381 up to 387!)



255.900 / 255.928

255.901 / 255.912

255.952

255.925

255.937

255.935

255.930

255.932

255.936

255.939

255.903

255.904

255.909

255.908

255.922

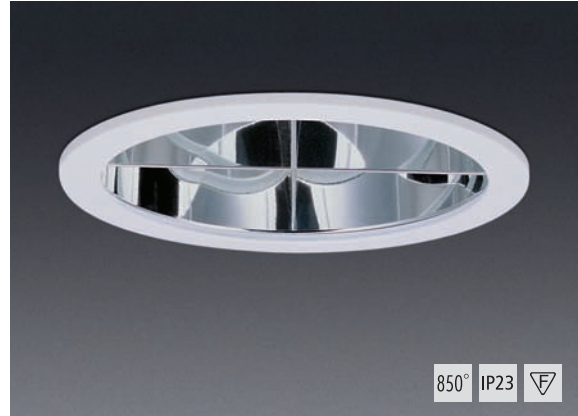
255.923



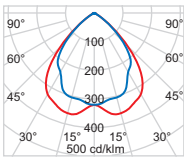
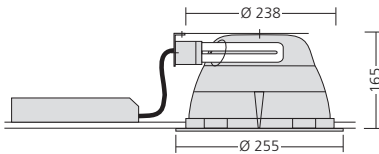
DL 255 eco – Cross louvre

Round modular recessed downlight for 14 and 17 Watt TC-TEL lamps

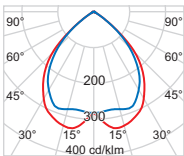
Round modular recessed downlight for 14 and 17 Watt TC-TEL lamps. Die-cast ceiling trim, white powder-coated, adjustable without tools. Fixing of the bezel via bayonet lock. Exchangeable remote gear box prepared for 5-pole through wiring and with „twist & lock“ socket base. Housing made of galvanised sheet steel with quick-release mounting springs for ceiling plate thickness from 1-25 mm. Cross louvre reflector made of high-polished vacuum metalised pure aluminium (Al99,98) for maximum LOR and iridescent-free colour rendering. Max. weight: 1,9 kg



Version	High frequency ballast (HF)	Digital dimmable HF ballast (DALI)	Diameter	Ceiling cut-out	Recessed height	Socket type
TC-TEL 2 x 14 W	255.42.14.63	255.42.14.66	255 mm	238 mm	165 mm	GR14q
TC-TEL 2 x 17 W	255.42.17.63	255.42.17.66	255 mm	238 mm	165 mm	GR14q



TC-TEL 2 x 14 W
 Half-value angle 2 x 43°
 Shielding angle 35°
 Critical radiation angle/1000 cd/m² 60°
 Light output ratio 65%



TC-TEL 2 x 17 W
 Half-value angle 2 x 45°
 Shielding angle 35°
 Critical radiation angle/1000 cd/m² 60°
 Light output ratio 65%

Attachments (Please order separately!)

Panel sheet module 100	255.0320
Mineral fibre reinforcing plate	255.1320
Adjusting ring	255.2010
Plaster ring	255.2020
Ring for semi-recessed (25 mm)	255.2025
Concrete casting drum	255.2035
Emergency light kit 1h*	255.0901
Emergency light kit 3h*	255.0900
Ceiling trim chrome	255.3020
Ceiling trim fine steel optic	255.3220
Ceiling trim special colour	255.3090

* LED supplied loose and is only on request assembled to luminaire.

Decor attachment (You will find a detailed decor attachment description on pages 381 up to 387!)



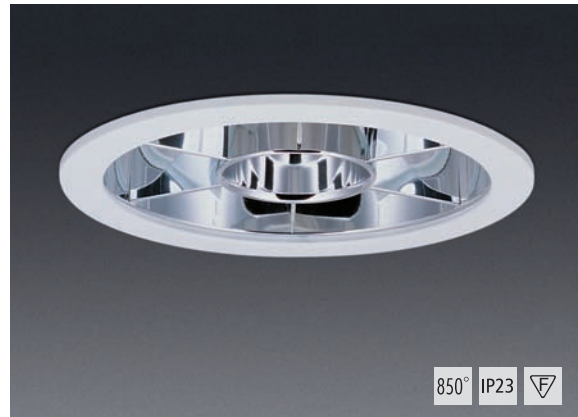
255.901 / 255.912



DL 255 eco – Radial louvre

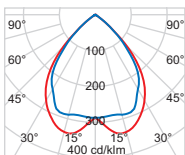
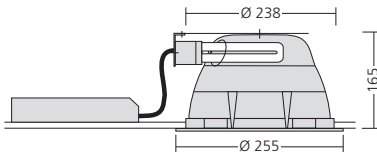
Round modular recessed downlight for 14 and 17 Watt TC-TEL lamps

Round modular recessed downlight for 14 and 17 Watt TC-TEL lamps. Die-cast ceiling trim, white powder-coated, adjustable without tools. Fixing of the bezel via bayonet lock. Exchangeable remote gear box prepared for 5-pole through wiring and with „twist & lock“ socket base. Housing made of galvanised sheet steel with quick-release mounting springs for ceiling plate thickness from 1-25 mm. Radial louvre reflector made of high-polished vacuum metalised pure aluminium (Al99,98) for maximum LOR and iridescent-free colour rendering. Max. weight: 1,9 kg

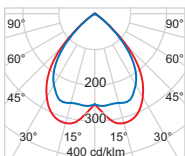


850° IP23

Version	High frequency ballast (HF)	Digital dimmable HF ballast (DALI)	Diameter	Ceiling cut-out	Recessed height	Socket type
TC-TEL 2 x 14 W	255.82.14.63	255.82.14.66	255 mm	238 mm	165 mm	GR14q
TC-TEL 2 x 17 W	255.82.17.63	255.82.17.66	255 mm	238 mm	165 mm	GR14q



TC-TEL 2 x 14 W
 Half-value angle 2 x 42°
 Shielding angle 43°
 Critical radiation angle/1000 cd/m² 55°
 Light output ratio 56%



TC-TEL 2 x 17 W
 Half-value angle 2 x 43°
 Shielding angle 43°
 Critical radiation angle/1000 cd/m² 55°
 Light output ratio 55%

Attachments (Please order separately!)

Panel sheet module 100	255.0320
Mineral fibre reinforcing plate	255.1320
Adjusting ring	255.2010
Plaster ring	255.2020
Ring for semi-recessed (25 mm)	255.2025
Concrete casting drum	255.2035
Emergency light kit 1h*	255.0901
Emergency light kit 3h*	255.0900
Ceiling trim chrome	255.3020
Ceiling trim fine steel optic	255.3220
Ceiling trim special colour	255.3090

* LED supplied loose and is only on request assembled to luminaire.

Decor attachment (You will find a detailed decor attachment description on pages 381 up to 387!)



255.901 / 255.912