



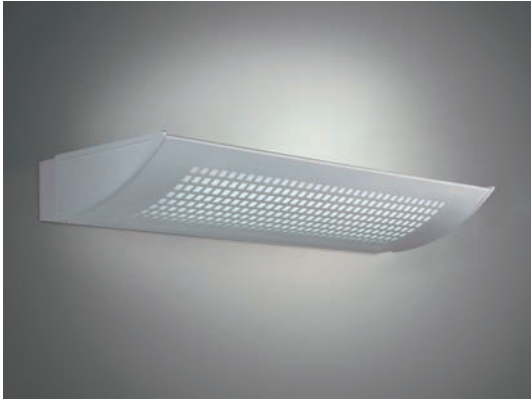
## SL 73

### Wall luminaire and uplighter

- Housing made of sheet steel, end caps made of die-cast aluminium, powder-coated in RAL 9006 with structure
- Square perforated cover or frosted glass
- Individual cover perforation on request
- Uplighter
- Available with dimmable HF ballast or emergency kits on request
- Compatible pendant and free standing luminaire

# SL 73

Wall luminaire with square perforated cover



Wall luminaire with square perforated cover for indirect and diffuse-direct lighting for TC-L lamps. Housing made of sheet steel, end caps made of aluminium, powder-coated in RAL 9006 with structure.

Max. weight: 5,0 kg

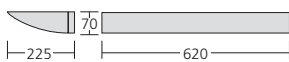
Version	RAL 9006 structure	Length x width x height	Socket type
TC-L 2 x 55 W c/w HF ballast	<b>73.302.55.3</b>	620 x 225 x 70 mm	2G11

**Attachments (Please order separately!)**

Emergency light kit 3h	<b>73.0900</b>
Special colour	<b>73.0090</b>

# SL 73

Wall luminaire with frosted glass



Wall luminaire with frosted glass diffuser for indirect and diffuse-direct lighting for TC-L lamps. Housing made of sheet steel, end caps made of aluminium, powder-coated in RAL 9006 with structure.

Max. weight: 5,0 kg

Version	RAL 9006 structure	Length x width x height	Socket type
TC-L 2 x 55 W c/w HF ballast	<b>73.332.55.3</b>	620 x 225 x 70 mm	2G11

**Attachments (Please order separately!)**

Emergency light kit 3h	<b>73.0900</b>
Special colour	<b>73.0090</b>

# SL 73

## Uplighter



Uplighter with for indirect lighting for HIT-DE and QT-DE lamps. Housing made of sheet steel, end caps made of aluminium, powder-coated in RAL 9006 with structure. Max. weight: 2,2 kg

Version	RAL 9006 structure	Length x width x height	Socket type
HIT-DE 70 W c/w HF ballast	<b>73.321.70.3</b>	295 x 225 x 75 mm	RX7s
QT-DE up to 300 W	<b>73.391.30.0</b>	295 x 225 x 75 mm	R7s

### Attachments (Please order separately!)

Special colour	<b>73.0090</b>
----------------	----------------

