

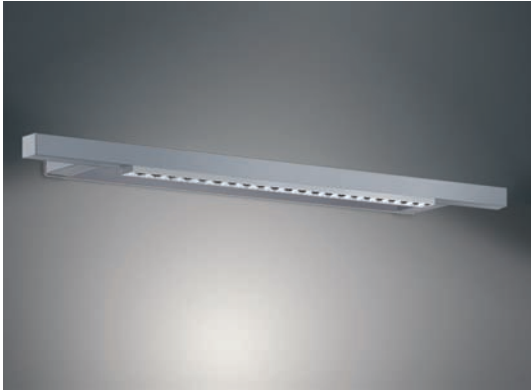
## SL 741

Miniature wall luminaire

- Housing made of extruded aluminium profile, surface EV1 (anodised); die-cast aluminium end caps powder-coated in anodically oxidised shade
- Micro prism diffuser or double parabolic louvre
- Luminaire also powder-coated in RAL 9006 with structure or in RAL 9016 with structure available

# SL 741

Wall luminaire with double parabolic louvre



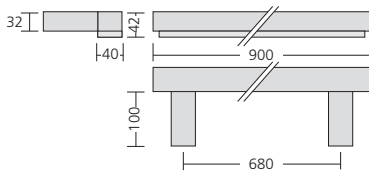
Wall luminaire with double parabolic louvre for direct lighting for T5 lamps. Housing made of extruded aluminium profile, end caps made of die-cast aluminium, surface EV1 (anodised).  
Max. weight: 1,5 kg

Version	EV1 (anodised)	Length x width x height	Socket type
T5 24 W c/w HF ballast	<b>741.381.24.3-24</b>	900 x 140 x 42 mm	G5

If you require the luminaire in white (RAL 9016 structure) please use „-10“ instead of „-24“, if you require the luminaire in RAL 9006 structure please use „-18“.

**Attachments (Please order separately!)**

Special colour	<b>741.0090</b>
----------------	-----------------



# SL 741

Wall luminaire with micro prism diffuser



Wall luminaire with micro prism diffuser for direct lighting for T5 lamps. Housing made of extruded aluminium profile, end caps made of die-cast aluminium, surface EV1 (anodised). Max. weight: 1,5 kg

Version	EV1 (anodised)	Length x width x height	Socket type
T5 24 W c/w HF ballast	<b>741.361.24.3-24</b>	900 x 140 x 42 mm	G5

If you require the luminaire in white (RAL 9016 structure) please use „-10“ instead of „-24“, if you require the luminaire in RAL 9006 structure please use „-18“.

**Attachments (Please order separately!)**

Special colour	<b>741.0090</b>
----------------	-----------------

