



SL 650

Surface mounted luminaire for T5 lamps

- Housing made of sheet steel, end caps made of die-cast aluminium, powder-coated in RAL 9006 with structure or in RAL 9016 with structure
- Double parabolic louvre, asymmetrical double parabolic louvre, wall washer, micro prism diffuser or frosted acrylic diffuser
- Double parabolic louvre: VDU application suitable acc. to European Standards EN 12464-1
- LOR optimised reflector
- Wire suspension available on request
- Compatible pendant and recessed luminaires
- Also in continuous mounted version available



SL 650

Surface mounted luminaire with double parabolic louvre

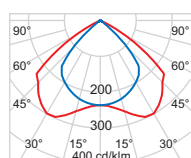
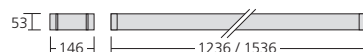
Surface mounted luminaire with double parabolic louvre for T5 lamps. Housing made of sheet steel, end caps made of die-cast aluminium, powder-coated. LOR optimised reflector. Double parabolic louvre made of high-polished metalised pure aluminium (Al 99.98). VDU application suitable acc. to European Standards EN 12464-1 (excepting 2 x 80 W). Max. weight: 3,9 kg



Surface: RAL 9006 structure

Version	High frequency ballast (HF)	Digital dimmable HF ballast (DALI)	Length x width x height	Socket type
T5 1 x 28 / 54 W	650.681.54.3-18	650.681.54.6-18	1236 x 146 x 53 mm	G5
T5 1 x 35 / 49 / 80 W	650.681.80.3-18	650.681.80.6-18	1536 x 146 x 53 mm	G5
T5 2 x 28 / 54 W	650.682.54.3-18	650.682.54.6-18	1236 x 146 x 53 mm	G5
T5 2 x 35 / 49 W	650.682.49.3-18		1536 x 146 x 53 mm	G5
T5 2 x 35 / 49 / 80 W	650.682.80.3-18	650.682.80.6-18	1536 x 146 x 53 mm	G5

If you require the luminaire in white (RAL 9016 structure) please use „-10“ instead of „-18“. Any other RAL colour „-9“.



T5 2 x 54 W
UGR 19,0 / 19,0
Critical radiation angle/1000 cd/m² 65°
Light output ratio 68%

Attachments (Please order separately!)

Emergency light kit 1h	650.0901
Emergency light kit 3h	650.0900
Special colour	650.0090
Double parabolic louvre matt-optic	650.5241
Y-wire suspension, 1,5 m	650.321-1500
Mains supply, transparent, 5 x 1,5 mm ²	650.1955.2T
Ceiling rose, square, RAL 9006 structure	900.004-18
Ceiling rose, round, RAL 9006 structure	900.001-18

SL 650

Surface mounted luminaire with asymmetrical double parabolic louvre

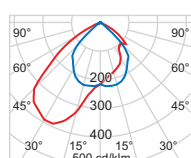
Surface mounted luminaire with asymmetrical double parabolic louvre for T5 lamps. Housing made of sheet steel, end caps made of die-cast aluminium, powder-coated. LOR optimised reflector. Asymmetrical double parabolic louvre made of high-polished metalised pure aluminium (Al 99.98). VDU application suitable acc. to European Standards EN 12464-1 (excepting asymmetrical light portion). Max. weight: 3,9 kg



Surface: RAL 9006 structure

Version	High frequency ballast (HF)	Digital dimmable HF ballast (DALI)	Length x width x height	Socket type
T5 1 x 28 / 54 W	650.671.54.3-18	650.671.54.6-18	1236 x 146 x 53 mm	G5
T5 1 x 35 / 49 / 80 W	650.671.80.3-18	650.671.80.6-18	1536 x 146 x 53 mm	G5

If you require the luminaire in white (RAL 9016 structure) please use „-10“ instead of „-18“. Any other RAL colour „-9“.



T5 1 x 54 W
Critical radiation angle/1000 cd/m² 64°
Light output ratio 64%
(excepting the asymmetrical light portion)

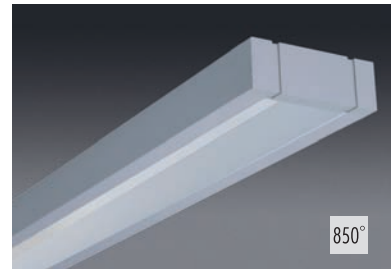
Attachments (Please order separately!)

Emergency light kit 1h	650.0901
Emergency light kit 3h	650.0900
Special colour	650.0090
Y-wire suspension, 1,5 m	650.321-1500
Mains supply, transparent, 5 x 1,5 mm ²	650.1955.2T
Ceiling rose, square, RAL 9006 structure	900.004-18
Ceiling rose, round, RAL 9006 structure	900.001-18

SL 650

Surface mounted luminaire with asymmetrical reflector - wallwasher

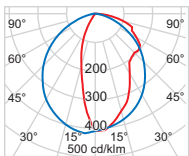
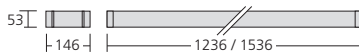
Surface mounted luminaire with asymmetrical reflector for T5 lamps. Housing made of sheet steel, end caps made of die-cast aluminium, powder-coated. LOR optimised reflector. Asymmetrical reflector made of matt anodised pure aluminium (Al 99.98).
Max. weight: 3,9 kg



Surface: RAL 9006 structure

Version	High frequency ballast (HF)	Digital dimmable HF ballast (DALI)	Length x width x height	Socket type
T5 1 x 28 / 54 W	650.611.54.3-18	650.611.54.6-18	1236 x 146 x 53 mm	G5
T5 1 x 35 / 49 / 80 W	650.611.80.3-18	650.611.80.6-18	1536 x 146 x 53 mm	G5

If you require the luminaire in white (RAL 9016 structure) please use „-10“ instead of „-18“. Any other RAL colour „-9“.



T5 1 x 54 W
Critical radiation angle/1000 cd/m² 90°
Light output ratio 77%

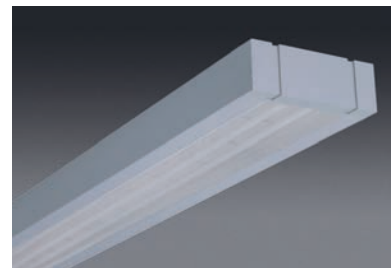
Attachments (Please order separately!)

Emergency light kit 1h	650.0901
Emergency light kit 3h	650.0900
Special colour	650.0090
Y-wire suspension, 1,5 m	650.321-1500
Mains supply, transparent, 5 x 1,5 mm ²	650.1955.2T
Ceiling rose, square, RAL 9006 structure	900.004-18
Ceiling rose, round, RAL 9006 structure	900.001-18

SL 650

Surface mounted luminaire with micro prism diffuser

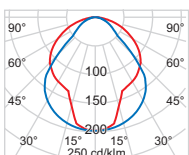
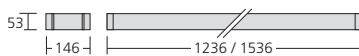
Surface mounted luminaire with micro prism diffuser for T5 lamps. Housing made of sheet steel, end caps made of die-cast aluminium, powder-coated. Max. weight: 4,1 kg



Surface: RAL 9006 structure

Version	High frequency ballast (HF)	Digital dimmable HF ballast (DALI)	Length x width x height	Socket type
T5 1 x 28 / 54 W	650.661.54.3-18	650.661.54.6-18	1236 x 146 x 53 mm	G5
T5 1 x 35 / 49 / 80 W	650.661.80.3-18	650.661.80.6-18	1536 x 146 x 53 mm	G5
T5 2 x 28 / 54 W	650.662.54.3-18	650.662.54.6-18	1236 x 146 x 53 mm	G5

If you require the luminaire in white (RAL 9016 structure) please use „-10“ instead of „-18“. Any other RAL colour „-9“.



T5 1 x 54 W
UGR 19,6 / 18,4
Critical radiation angle/1000 cd/m² 90°
Light output ratio 52%

Attachments (Please order separately!)

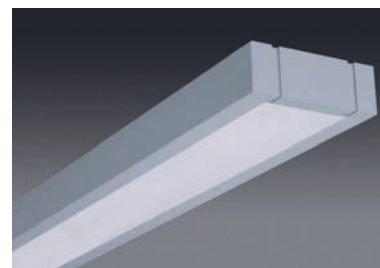
Emergency light kit 1h	650.0901
Emergency light kit 3h	650.0900
Special colour	650.0090
Y-wire suspension, 1,5 m	650.321-1500
Mains supply, transparent, 5 x 1,5 mm ²	650.1955.2T
Ceiling rose, square, RAL 9006 structure	900.004-18
Ceiling rose, round, RAL 9006 structure	900.001-18

SL 650

Surface mounted luminaire with frosted acrylic diffuser

Surface mounted luminaire with frosted acrylic diffuser for T5 lamps. Housing made of sheet steel, end caps made of die-cast aluminium, powder-coated.

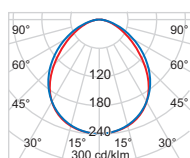
Max. weight: 4,1 kg



Surface: RAL 9006 structure

Version	High frequency ballast (HF)	Digital dimmable HF ballast (DALI)	Length x width x height	Socket type
T5 1 x 28 / 54 W	650.691.54.3-18	650.691.54.6-18	1236 x 146 x 53 mm	G5
T5 1 x 35 / 49 / 80 W	650.691.80.3-18	650.691.80.6-18	1536 x 146 x 53 mm	G5
T5 2 x 28 / 54 W	650.692.54.3-18	650.692.54.6-18	1236 x 146 x 53 mm	G5

If you require the luminaire in white (RAL 9016 structure) please use „-10“ instead of „-18“. Any other RAL colour „-9“.



T5 1 x 54 W
 UGR 20,1 / 19,2
 Critical radiation angle/1000 cd/m² 90°
 Light output ratio 66%

Attachments (Please order separately!)

Emergency light kit 1h	650.0901
Emergency light kit 3h	650.0900
Special colour	650.0090
Y-wire suspension, 1,5 m	650.321-1500
Mains supply, transparent, 5 x 1,5 mm ²	650.1955.2T
Ceiling rose, square, RAL 9006 structure	900.004-18
Ceiling rose, round, RAL 9006 structure	900.001-18