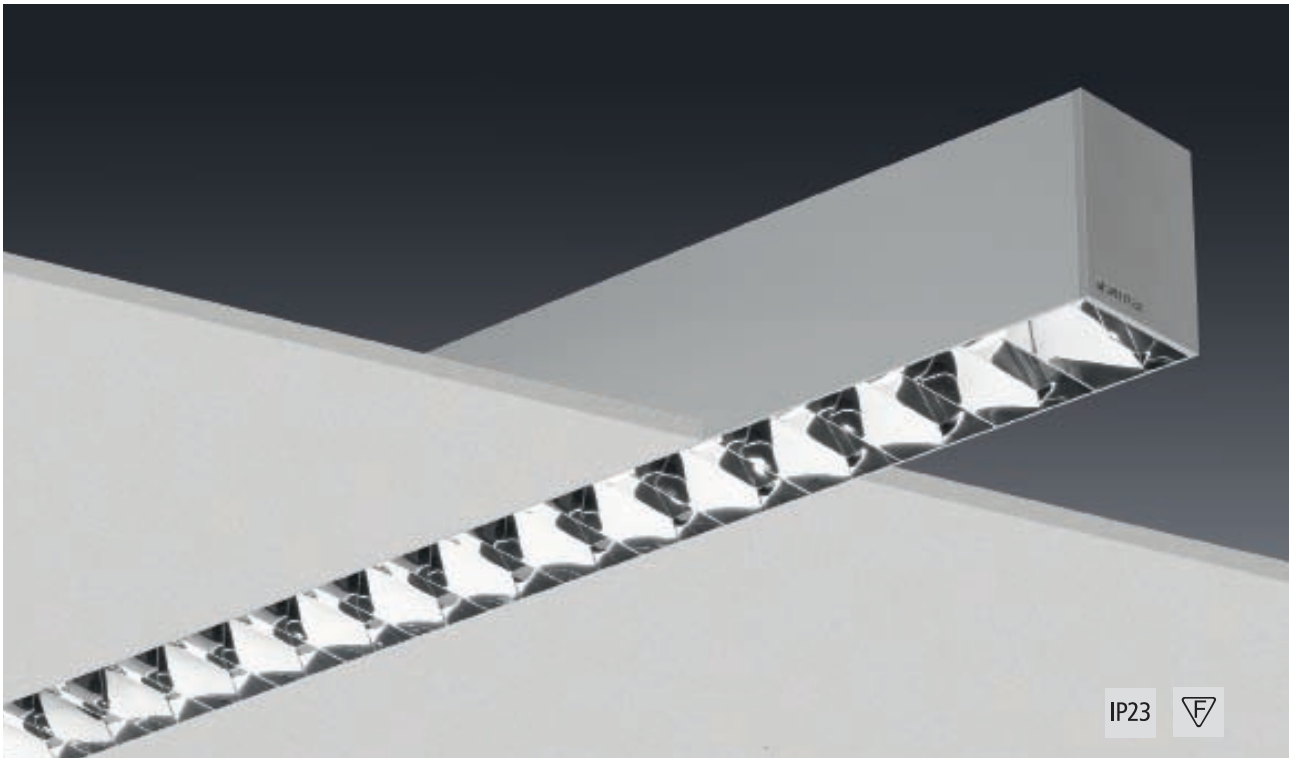


SL 787 - Lighting System

A system which leaves nothing to be desired

- Flexible in planning and execution
- Installation-friendly and efficient in mounting
- Economical: energy-saving by high efficiency and most up-to-date light technique
- Quick availability
- Special requests realisable on demand
- Illuminated corners
- Homogeneous light distribution
- Linear or diagonally overlapping arrangement of gear trays
- All gear trays with Multiwatt electronic ballast
- Double parabolic louvre VDU workstation suitable according to EN 12464-1
- All profiles are prepared for site installation

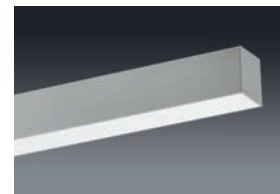
SL 787 – Trimless profile



- High-quality extruded aluminium profile
- Colour: anodised
- Recessed version flush with ceiling and wall
- Surface mounted and suspended version
- Available light optics: double parabolic louvre made of MIRO-SILVER®, micro prism diffuser, opal-white PMMA diffuser
- Gear trays and light optics installed without any tools by SPITTLER click-in system
- Gear trays with Multiwatt ballast
- **Attention:** Please note required profile length along with the order!
- Profile will be delivered in modules



Suspended version



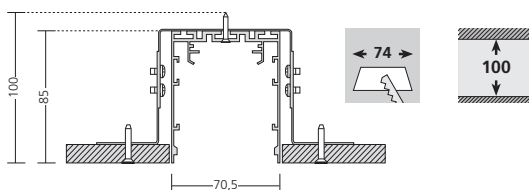
Surface mounted version

Version	Art-No.
Trimless profile	787.590.1000

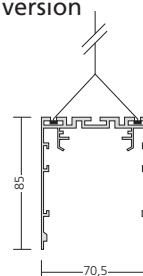
Attention: During the luminaire operation the aluminium profile could extend approx. 1 mm per running meter.

You will find gear trays and light optics on pages 134-136!

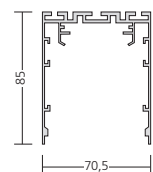
Recessed version



Suspended version



Surface mounted version



Attachments (Please order separately!)

**Recessed kit for plasterboard ceilings**

- Recessed version: flush with ceiling
- Quantity is defined by factory
- Ceiling plate thickness from 10-25 mm
- Other ceiling types on request

787.4991**Square ceiling rose**

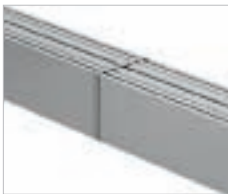
- Powder-coated in RAL 9006 structure
- Dimensions: 80 x 80 x 25 mm

900.004-18**Y-steel wire suspension**

- Length: 1,5 m

787.321-1500**Round ceiling rose**

- Powder-coated in RAL 9006 structure
- Diameter: \varnothing 80 mm
- Height: 25 mm

900.001-18**Coupler for surface mounted or suspended versions**

- Colour: powder-coated in anodically oxidised shade

787.4990**Blind cover**

- According to request
- Made of extruded aluminium profile
- Colour: anodised

787.07.1000**Two end caps**

- Made of die-cast aluminium
- Colour: powder-coated in anodically oxidised shade

787.4984**Profile in special RAL colour****787.0090****Corner coupler**

- 90° corner
- Made of extruded aluminium profile
- Colour: anodised

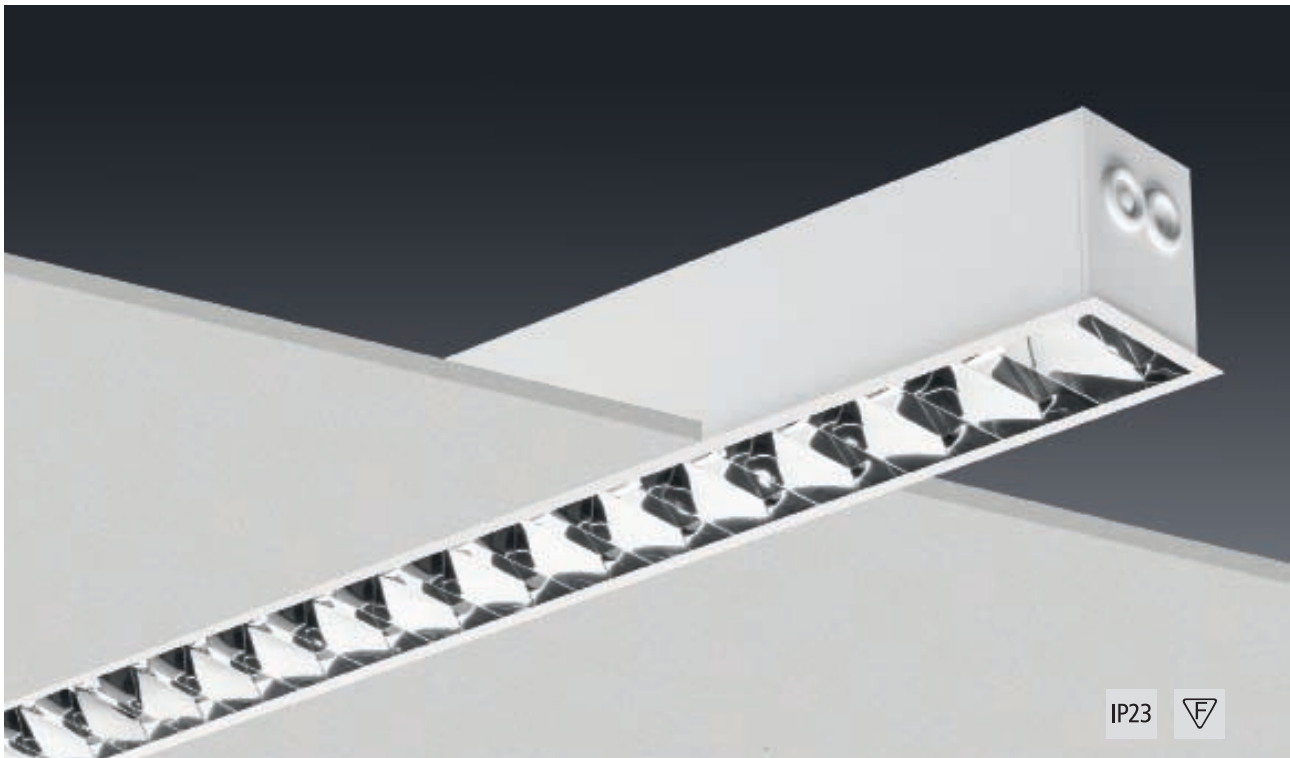
787.20.090**Emergency kit 1 hour****787.0901****1.8 m transparent mains supply**

- C/w terminal block and suspension retainer
- Through-wiring 5 x 1.5 mm²

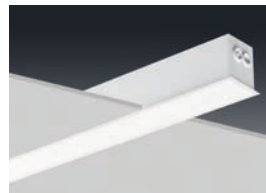
650.1955.2T**Individual corner**

- On request

SL 787 – Profile with frame



- High-quality extruded aluminium profile
- Colour: powder-coated in white (RAL 9016 structure)
- Recessed version with 8 mm frame
- Available light optics: double parabolic louvre made of MIRO-SILVER®, micro prism diffuser, opal-white PMMA diffuser
- Gear trays and light optics installed without any tools by SPITTLER click-in system
- Gear trays with Multiwatt ballast
- **Attention:** Please note required profile length along with the order!
- Profile will be delivered in modules



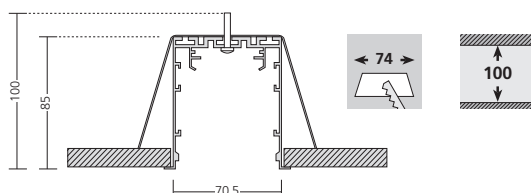
Recessed version

Version	Art-Nr.
Profile with frame	787.591.1000

Attention: During the luminaire operation the aluminium profile could extend approx. 1 mm per running meter.

You will find gear trays and light optics on pages 134-136!

Recessed version



Attachments (Please order separately!)

**Recessed kit for plasterboard ceilings**

- Quantity is defined by factory
- Ceiling plate thickness from 10-25 mm
- Other ceiling types on request

787.4992**Profile in special RAL colour****787.0090****Two end caps**

- Made of die-cast aluminium
- Colour: powder-coated in white (RAL 9016 structure)

787.4982**Emergency kit 1 hour****787.0901****Corner coupler**

- 90° corner
- Made of extruded aluminium profile
- Colour: powder-coated in white (RAL 9016 structure)

787.21.090**Individual corner**

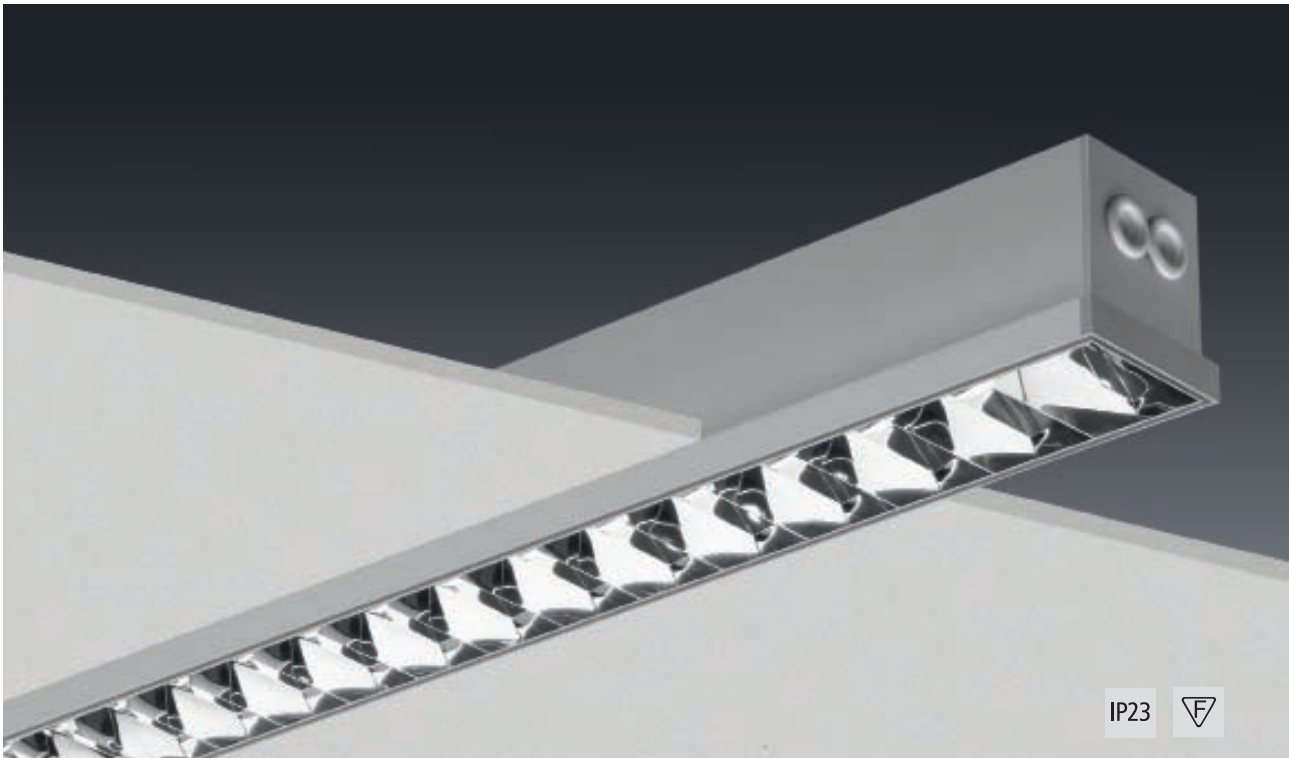
- On request

**Blind cover**

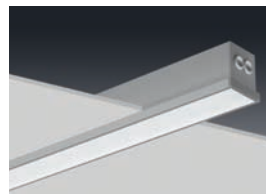
- According to request
- Made of extruded aluminium profile
- Colour: powder-coated in white (RAL 9016 structure)

787.07.1000

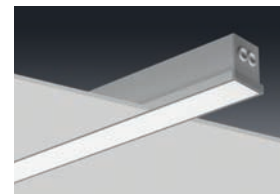
SL 787 – Profile with shadow gap



- High-quality extruded aluminium profile
- Colour: anodised
- Recessed version with shadow gap flush with the ceiling
- Semi-recessed version with shadow gap
- Available light optics: double parabolic louvre made of MIRO-SILVER®, micro prism diffuser, opal-white PMMA diffuser
- Gear trays and light optics installed without any tools by SPITTLER click-in system
- Gear trays with Multiwatt ballast
- **Attention:** Please note required profile length along with the order!
- Profile will be delivered in modules



Recessed version: semi-recessed



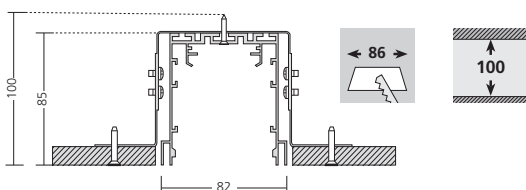
Recessed version: flush with ceiling

Version	Art-No.
Profile with shadow gap	787.592.1000

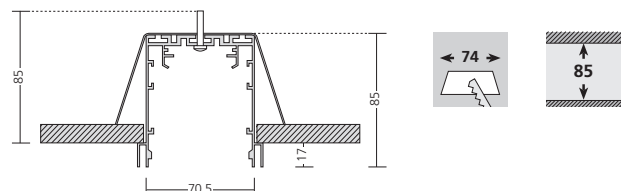
Attention: During the luminaire operation the aluminium profile could extend approx. 1 mm per running meter.

You will find gear trays and light optics on pages 134-136!

Recessed version: flush with ceiling



Recessed version: semi-recessed



Attachments (Please order separately!)

**Recessed kit for plasterboard ceilings**

- Recessed version: flush with ceiling
- Quantity is defined by factory
- Ceiling plate thickness from 10-25 mm
- Other ceiling types on request

787.4991**Blind cover**

- According to request
- Made of extruded aluminium profile
- Colour: anodised

787.07.1000**Recessed kit for plasterboard ceilings**

- Recessed version: semi-recessed
- Quantity is defined by factory
- Ceiling plate thickness from 10-25 mm
- Other ceiling types on request

787.4993**Profile in special RAL colour****787.0090****Two end caps**

- Made of die-cast aluminium
- Colour: powder-coated in anodically oxidised shade

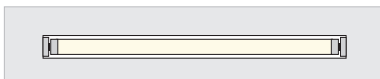
787.4983**Emergency kit 1 hour****787.0901****Corner coupler**

- 90° corner
- Made of extruded aluminium profile
- Colour: anodised

787.22.090**Individual corner**

- On request

SL 787 – Gear tray for linear installation



- Gear tray made of white sheet steel with integrated reflection surface
- Linear lamp arrangement
- Quick installation without any tools by **SPITTLER click-in system**
- Pre-assembled through-wiring
- Integrated Multiwatt ballast
- 5-pole terminal block

Use for double parabolic louvre or batten lights

Version	High frequency ballast	Digital dimmable HF ballast (DALI)	Length	Socket	Weight
T16 14 / 24 W	7.51.14.53L	7.51.14.56L	585 mm	G5	0,7 kg
T16 21 / 39 W	7.51.21.53L	7.51.21.56L	885 mm	G5	0,8 kg
T16 28 / 54 W	7.51.28.53L	7.51.28.56L	1185 mm	G5	0,9 kg
T16 35 / 49 / 80 W	7.51.35.53L	7.51.35.56L	1485 mm	G5	1,0 kg

Planning example

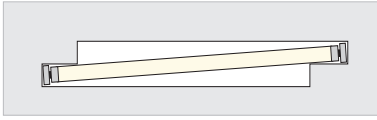
Profile length: 4 gear trays (7.51.28.53L) à 54 Watt = profile length **4740 mm** + end caps

Attention: Profile length is due to the quantity of gear trays.

Calculation chart (End caps are not considered.)

required length	14 / 24 Watt	21 / 39 Watt	28 / 54 Watt	35 / 49 / 80 Watt	final length
2,0 m		1	1		2,07 m
2,5 m			1	1	2,67 m
3,0 m				2	2,97 m
3,5 m	1			2	3,56 m
4,0 m			2	1	3,86 m
5,0 m	1			3	5,04 m
7,5 m				5	7,43 m
10,0 m			1	6	10,10 m
15,0 m				10	14,85 m
20,0 m	1			13	19,89 m
25,0 m			1	16	24,95 m
50,0 m			1	33	50,19 m

SL 787 – Gear tray for diagonal overlapping gear tray

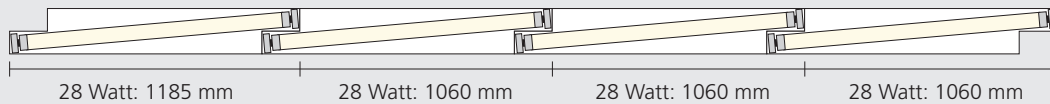


- Gear tray made of white sheet steel with integrated reflection surface
- Diagonally overlapping lamp arrangement
- Homogeneous almost uniform appearance
- Quick installation without any tools by **SPITTLER click-in system**
- Pre-assembled through-wiring
- Integrated Multiwatt ballast
- 5-pole terminal block

Use for micro prism or opal white PMMA diffuser

Version	High frequency ballast	Digital dimmable HF ballast (DALI)	Length	Socket	Weight
T16 14 / 24 W	7.51.14.53V	7.51.14.56V	585 mm	G5	0,7 kg
T16 21 / 39 W	7.51.21.53V	7.51.21.56V	885 mm	G5	0,8 kg
T16 28 / 54 W	7.51.28.53V	7.51.28.56V	1185 mm	G5	0,9 kg
T16 35 / 49 W	7.51.35.53V	7.51.35.56V	1485 mm	G5	1,0 kg

Planning example



Profile length: 4 gear trays (7.51.28.53V) á 28 Watt = profile length **4360 mm** + end caps

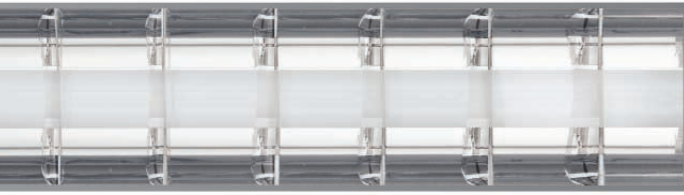
Optimum overlapping per gear tray: 120 mm

Attention: Profile length is due to the quantity of gear trays.

Calculation chart (End caps are not considered.)

required length	14 / 24 Watt	21 / 39 Watt	28 / 54 Watt	35 / 49 / 80 Watt	final length
2,0 m		1	1		1,94 m
2,5 m			1	1	2,54 m
3,0 m		1	2		3,00 m
3,5 m			2	1	3,60 m
4,0 m			1	2	3,90 m
4,5 m	1			3	4,66 m
5,0 m		1		3	5,05 m
10,0 m	1			7	10,10 m
15,0 m				11	15,08 m
20,0 m			2	13	19,82 m
25,0 m				18	24,60 m
50,0 m	1		1	35	49,24 m

SL 787 – Light optics



Double parabolic louvre made of MIRO-SILVER®

The used material MIRO-SILVER® compels by a total reflection of 98 %. The high-brilliant double parabolic louvre with MIRO-SILVER® coating provides the highest grades of efficiency of 90 % at a complete liberty of colour interference. VDU workstation suitable as per European Standards EN 12464-1 is guaranteed. The double parabolic louvre is as well mountable in the profile by the simple **SPITTLER Click-In System** and additionally secured against falling-off when changing the lamp.

Version	Length	Art-No.	Weight
14 / 24 W	585 mm	787.08.14	0,2 kg
21 / 39 W	885 mm	787.08.21	0,2 kg
28 / 54 W	1185 mm	787.08.28	0,3 kg
35 / 49 / 80 W	1485 mm	787.08.35	0,3 kg



Micro prism

The light guiding micro prism has specifically been developed for high luminous flux. By concentration of the light radiation this has the effect of a higher illumination power on the working surface while the dazzling effect is reduced at the same time. Mounting into the profile is done by the uncomplicated **SPITTLER Click-In System**.

Version	Art-Nr.
Micro prism	787.06.1000

Attention: Please note required profile length along with the order!



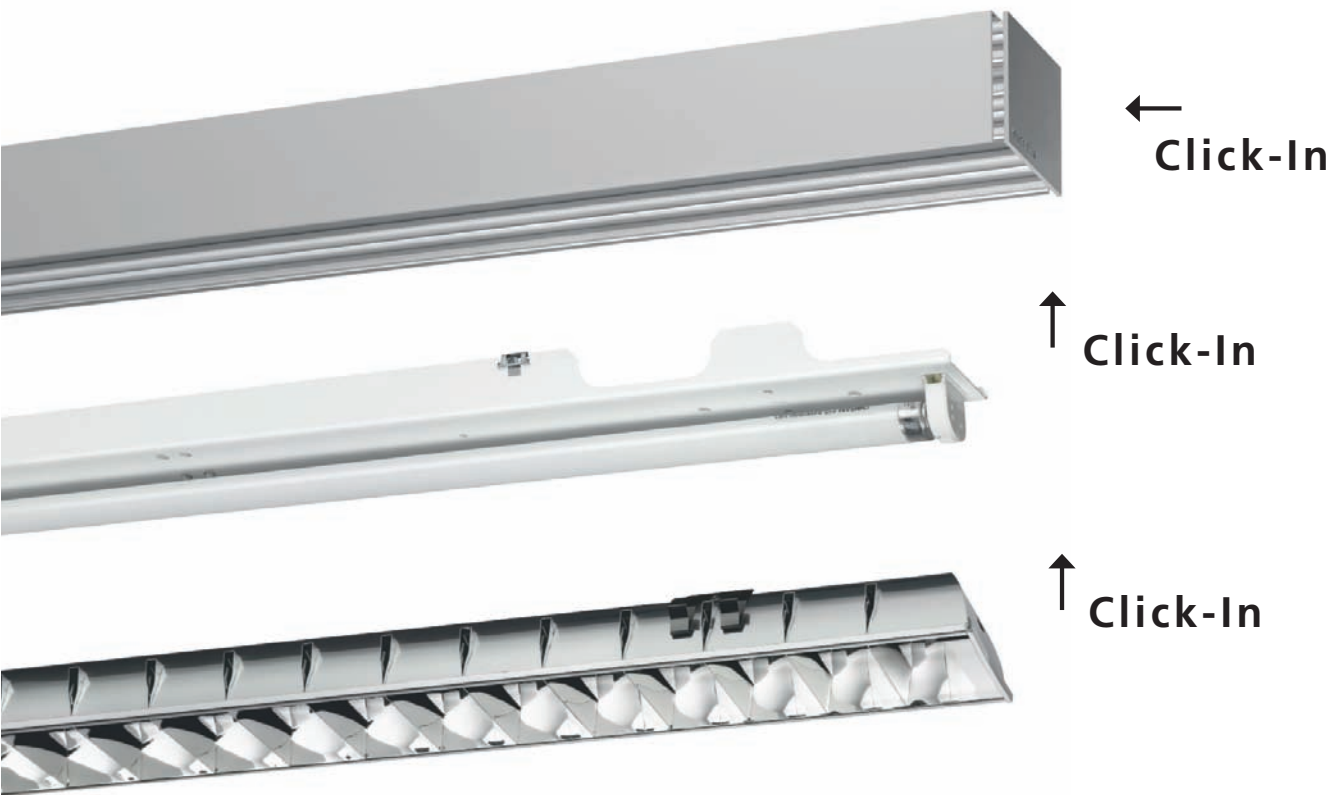
Opal white PMMA diffuser

The opal white PMMA diffuser creates a very constant homogenous illumination. The light atmosphere has a convenient and comfortable effect. It is mounted into the profile without any tools by the **SPITTLER Click-In System**.

Version	Art-Nr.
Opal white PMMA diffuser	787.04.1000

Attention: Please note required profile length along with the order!

SPITTLER Click-In System



Lighting System

The simple and quick mounting of our luminaire systems help you to keep installation costs under control already in the planning phase. Therefore, we have developed the **SPITTLER Click-In System** for the series SL 787 and SL 790. Gear trays and optics can hence be mounted in the profile effortlessly with only a few simple actions. This doesn't only mean saving time during installation but also keeping later exchanges of luminaires uncomplicated.

