



design Roberto Fiorato

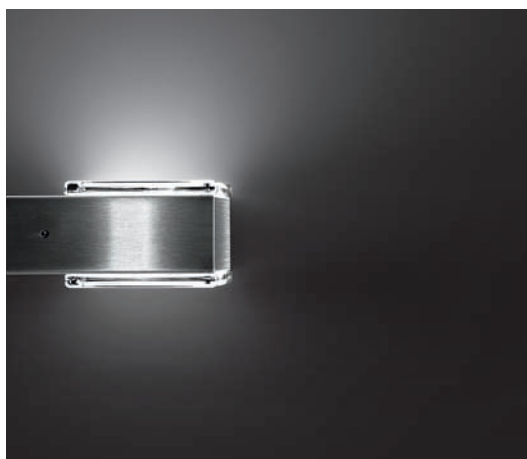


KUBA

Wall luminaires

A series of indoor wall luminaires, in three different sizes, with profile in four different finishes. Kuba has a double diffuser in pressed glass, internally painted for soft, evenly distributed light.

A screen that can be used to direct the light beam up or down is available as an accessory. The stainless steel screen of the Kuba 110 model, which can also be mounted vertically, can be customized with logos or monograms upon request. Its essential geometric shape and versatility of application make Kuba ideal for common areas and hotels.



KUBA 110

Wall luminaire for halogen lamps



Wall luminaire. Wall mount in white galvanized steel.

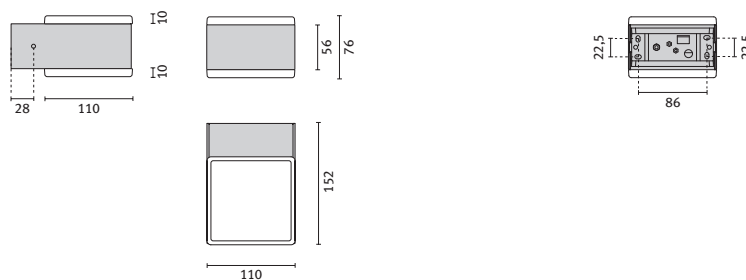
Profile in satin finish stainless steel. Upper and lower diffusers in pressed glass

internally painted at high temperature. Stainless steel locking grub screws

Profile and diffusers are connected together with a stainless steel spring.

Available as an accessory, stainless steel screen for closing the glass for UpLight or

DownLight models if desired. Class I, IP40.



Version	Stainless steel	Socket type
QT 14 max. 60 W	006432	G9



The screen of the Kuba 110 can be customized upon request with designs, decorations, signage elements and pictograms.

Accessories (Please order separately!)

	Stainless steel
Kuba 110 screen	006437



Installation and maintenance are extremely simple. The glass diffusers are anchored to the stainless steel profile by means of retaining springs; the whole fastened to the wall plate with two lateral screws.

KUBA 200

Wall luminaire for halogen and fluorescent lamps



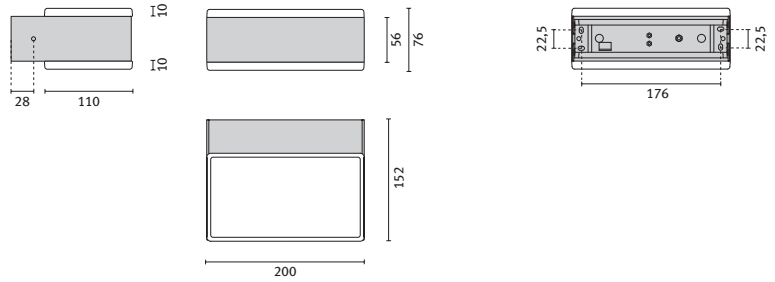
Wall luminaire. Wall mount in white galvanized steel.

Profile in satin finish stainless steel. Upper and lower diffusers in pressed glass

internally painted at high temperature. Stainless steel locking grub screws

Profile and diffusers are connected together with a stainless steel spring.

Available as an accessory, stainless steel screen for closing the glass for UpLight or DownLight models if desired. Class I, IP40.



Version	Stainless steel	Corten	Polished black nickel	Copper bronze	Socket type
QT-DE 12 max. 100 W	006433	-	-	-	R7s
TC-DEL 13 W c/w electronic ballast	006572	3005675	3005725	3005775	G24q-1
TC-DEL 18 W c/w electronic ballast	006577	3005685	3005735	3005785	G24q-2



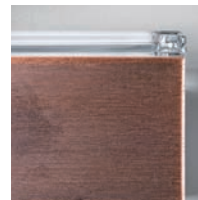
Stainless steel



Corten



Polished black nickel



Copper bronze

Accessories (Please order separately!)

	Stainless steel
Kuba 200 screen	006438

KUBA 300

Wall luminaire for LED, discharge and fluorescent lamps



Wall luminaire. Wall mount in white galvanized steel.

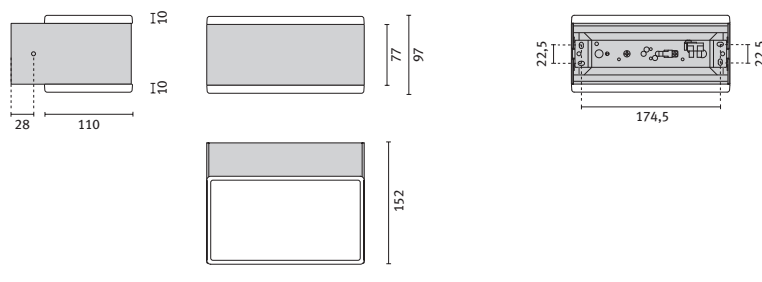
Profile in satin finish stainless steel. Upper and lower diffusers in pressed glass

internally painted at high temperature. Stainless steel locking grub screws

Profile and diffusers are connected together with a stainless steel spring.

Available as an accessory, stainless steel screen for closing the glass for UpLight or

DownLight models if desired. Class I, IP40.



Version	Stainless steel	Stainless steel - White led	Socket type
TC-TEL 26 W c/w electronic ballast	3021615	-	GX24q-3
HIT-TC 20 W c/w electronic ballast	3021605	-	G8,5
n. 6 Power Led 7,2 W 3000 K	-	3021625	-
n. 6 Power Led 7,2 W 6500 K	-	3021635	-

Accessories (Please order separately!)

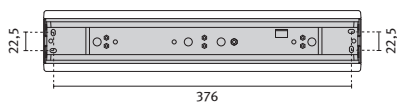
	Stainless steel
Kuba 200 screen	006438



Installation and maintenance are extremely simple. The glass diffusers are anchored to the stainless steel profile by means of retaining springs; the whole fastened to the wall plate with two lateral screws.

KUBA 400

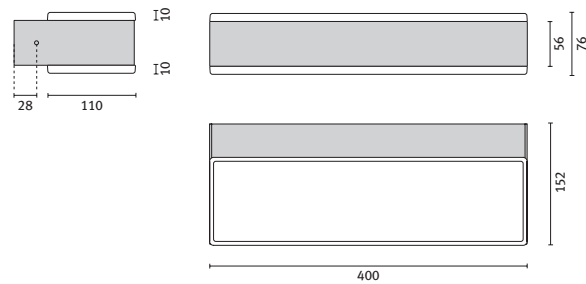
Wall luminaire for halogen and fluorescent lamps



Wall luminaire. Wall mount in white galvanized steel.

Profile in satin finish stainless steel. Upper and lower diffusers in pressed glass internally painted at high temperature. Stainless steel locking grub screws. Profile and diffusers are connected together with a stainless steel spring.

Available as an accessory, stainless steel screen for closing the glass for UpLight or DownLight models if desired. Class I, IP40.



Version	Stainless steel	Corten	Polished black nickel	Copper bronze	Socket type
QT-DE 12 2 x 60 W	006435	-	-	-	R7s
TC-L 24 W c/w electronic ballast	006574	3005825	3005855	3005885	2G11



Stainless steel



Corten



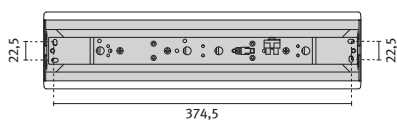
Polished black nickel



Copper bronze

KUBA 500

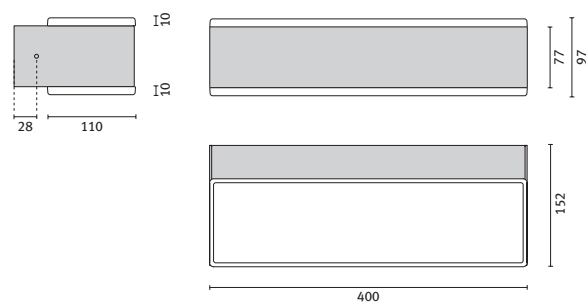
Wall luminaire for LED, discharge and fluorescent lamps



Wall luminaire. Wall mount in white galvanized steel.

Profile in satin finish stainless steel. Upper and lower diffusers in pressed glass internally painted at high temperature. Stainless steel locking grub screws. Profile and diffusers are connected together with a stainless steel spring.

Available as an accessory, stainless steel screen for closing the glass for UpLight or DownLight models if desired. Class I, IP40.



Accessories (Please order separately!)

	Stainless steel
Kuba 400 screen	006439

Version	Stainless steel	Stainless steel - White led	Socket type
TC-L 2 x 24 W c/w electronic ballast	3021645	-	2G11
HIT-TC 2 x 20 W c/w electronic ballast	3021655	-	G8,5
n. 12 Power Led 14,4 W 3000 K	-	3021665	-
n. 12 Power Led 14,4 W 6500 K	-	3021675	-

