



EB 21 / 22

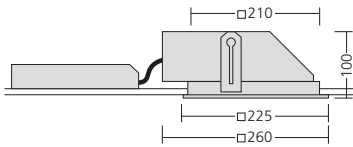
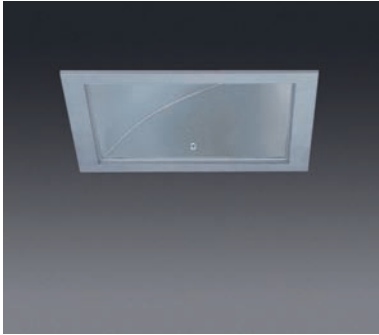
Recessed light for asymmetrical light distribution

- Frame made of extruded aluminium profile, powder-coated in RAL 9006 with structure
- Housing made of galvanised sheet steel
- Asymmetrical reflector made of matt anodised pure aluminium (Al 99.98)
- C/w remote ballast
- Lamp change without using of tools
- Suitable for ceiling (wallwasher) and wall recessed mounting



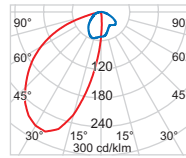
EB 21

Recessed light for asymmetrical light distribution



Recessed light for TC-D / TC-T lamps for asymmetrical light distribution. Extruded aluminium profile frame, powder-coated in RAL 9006 with structure. Housing made of galvanised sheet steel. C/w remote HF ballast. Reflector made of sand-blasted pure aluminium. Max.weight: 2.8 kg

Version	High frequency ballast (HF)	Outer dimension	Ceiling cut-out	Recessed height	Socket type
TC-DEL 18 W	21.54.18.53	225 x 225 mm	210 x 210 mm	100 mm	G24q
TC-TEL 26 W	21.54.26.63	225 x 225 mm	210 x 210 mm	100 mm	GX24q
TC-TEL 32 W	21.54.32.63	225 x 225 mm	210 x 210 mm	100 mm	GX24q



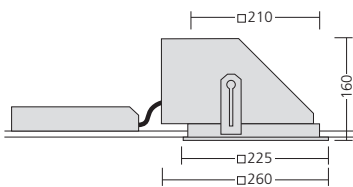
TC-T 26 W

Half-value angle 60 / 5°
Light output ratio 40%



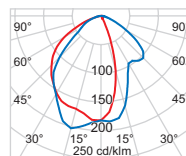
EB 22

Recessed light for asymmetrical light distribution



Recessed light for TC-D / TC-T lamps for asymmetrical light distribution. Extruded aluminium profile frame, powder-coated in RAL 9006 with structure. Housing made of galvanised sheet steel. C/w remote HF ballast. Reflector made of sand-blasted pure aluminium. Max. weight: 2,9 kg

Version	High frequency ballast (HF)	Outer dimension	Ceiling cut-out	Recessed height	Socket type
TC-DEL 2 x 18 W	22.54.18.53	225 x 225 mm	210 x 210 mm	160 mm	G24q
TC-TEL 2 x 26 W	22.54.26.63	225 x 225 mm	210 x 210 mm	160 mm	GX24q
TC-TEL 2 x 32 W	22.54.32.63	225 x 225 mm	210 x 210 mm	160 mm	GX24q



TC-T 2 x 26 W

Half-value angle 55 / 15°
Light output ratio 35%