

Products to go...

... lead time 48 hours!

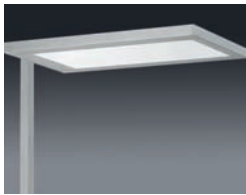


PERFORMANCE  
LIGHT  G

 SPITTLER®

# Office and Administration Lighting

## SL 730 – Free standing luminaire with micro prism diffuser



VDU application suitable acc. to European Standards EN 12464-1

Description	
Lamp	TC-L
Socket	2G11
Ballast	high-frequency
Optic	micro prism diffuser
Colour	RAL 9006 structure
Order quantity	max. 20 numbers

Version	Article Code	Price	Dimensions (LxWxH)
4 x 55 Watt	<b>730.764.55.3-18</b>	<b>560 €</b>	645 x 350 x 1900 mm

### Einleuchtende Vorteile:

- Parabolic louvre made of MIRO® aluminium
- High quality micro prism diffuser
- Aluminium die-cast end caps
- Powder-coated surfaces in RAL 9006 structure
- VDU application suitable acc. to EN 12464-1 (see products)
- Electronic Multiwatt ballasts (HF) for SL 624 and SL 650 (excepting 3 lamp version)
- Delivered ready for connection including mains supply and wire suspension

## SL 624 – Free standing luminaire with micro prism diffuser



VDU application suitable acc. to European Standards EN 12464-1

Description	
Lamp	TC-L
Socket	2G11
Ballast	high-frequency
Optic	micro prism diffuser
Colour	RAL 9006 structure
Order quantity	max. 20 numbers

Version	Article Code	Price	Dimensions (LxWxH)
4 x 55 Watt	<b>624.764.55.3-18</b>	<b>516 €</b>	660 x 330 x 1900 mm

## SL 740 – Free standing luminaire with micro prism diffuser

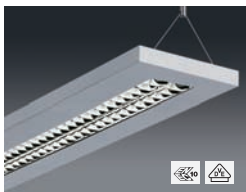


bei 2-lampigem Betrieb:  
VDU application suitable acc. to European Standards EN 12464-1

Description	
Lamp	TC-L
Socket	2G11
Ballast	high-frequency
Optic	micro prism diffuser
Colour	RAL 9006 structure
Order quantity	max. 20 numbers

Version	Article Code	Price	Dimensions (LxWxH)
4 x 55 Watt	<b>740.764.55.3-18</b>	<b>593 €</b>	645 x 312 x 1900 mm

## SL 624 – Pendant luminaire with double parabolic louvre

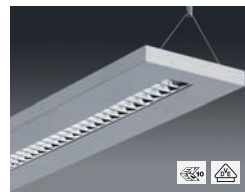


VDU application suitable acc. to European Standards EN 12464-1

Description	
Lamp	T5
Socket	G5
Ballast	Multiwatt HF
Optic	double parabolic louvre
Colour	RAL 9006 structure
Order quantity	max. 20 numbers

Version	Article Code	Price	Dimensions (LxWxH)
2 x 28/54 Watt	<b>624.482.54.3-18</b>	<b>299 €</b>	1238 x 190 x 38 mm
2 x 35/49 Watt	<b>624.482.49.3-18</b>	<b>328 €</b>	1538 x 190 x 38 mm

## SL 624 – Pendant luminaire with double parabolic louvre



VDU application suitable acc. to European Standards EN 12464-1

Description	
Lamp	T5
Socket	G5
Ballast	high-frequency
Optic	double parabolic louvre
Colour	RAL 9006 structure
Order quantity	max. 20 numbers

Version	Article Code	Price	Dimensions (LxWxH)
3 x 54 Watt	<b>624.483.54.3-18</b>	<b>400 €</b>	1238 x 190 x 38 mm
3 x 80 Watt	<b>624.483.80.3-18</b>	<b>449 €</b>	1538 x 190 x 38 mm

### SL 740 – Pendant luminaire with micro prism diffuser



Description	
Lamp	T5
Socket	G5
Ballast	high-frequency
Optic	micro prism diffuser
Colour	RAL 9006 structure
Order quantity	max. 20 numbers

VDU application suitable acc. to European Standards EN 12464-1

Version	Article Code	Price	Dimensions (LxWxH)
2 x 54 Watt	<b>740.462.54.3-18</b>	<b>544 €</b>	1200x250x40 mm
2 x 80 Watt	<b>740.462.80.3-18</b>	<b>571 €</b>	1500x250x40 mm

### SL 650 – Pendant luminaire with double parabolic louvre



Description	
Lamp	T5
Socket	G5
Ballast	Multiwatt HF
Optic	double parabolic louvre
Colour	RAL 9006 structure
Order quantity	max. 20 numbers

VDU application suitable acc. to European Standards EN 12464-1

Version	Article Code	Price	Dimensions (LxWxH)
2 x 28/54 Watt	<b>650.482.54.3-18</b>	<b>220 €</b>	1236x146x53 mm
1 x 35/49/80 Watt	<b>650.481.80.3-18</b>	<b>220 €</b>	1536x146x53 mm

### SL 650 – Pendant luminaire with micro prism diffuser



Description	
Lamp	T5
Socket	G5
Ballast	Multiwatt HF
Optic	micro prism diffuser
Colour	RAL 9006 structure
Order quantity	max. 20 numbers

one lamp version:  
VDU application suitable acc. to European Standards EN 12464-1

Version	Article Code	Price	Dimensions (LxWxH)
2 x 28/54 Watt	<b>650.462.54.3-18</b>	<b>220 €</b>	1236x146x53 mm
1 x 35/49/80 Watt	<b>650.461.80.3-18</b>	<b>220 €</b>	1536x146x53 mm

### SL 650 – Pendant luminaire with frosted acrylic diffuser



Description	
Lamp	T5
Socket	G5
Ballast	Multiwatt HF
Optic	frosted acrylic diffuser
Colour	RAL 9006 structure
Order quantity	max. 20 numbers

Version	Article Code	Price	Dimensions (LxWxH)
2 x 28/54 Watt	<b>650.492.54.3-18</b>	<b>211 €</b>	1236x146x53 mm
1 x 35/49/80 Watt	<b>650.491.80.3-18</b>	<b>211 €</b>	1536x146x53 mm

### SL 650 – Surface mounted luminaire with double parabolic louvre

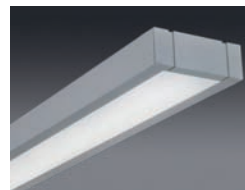


Description	
Lamp	T5
Socket	G5
Ballast	Multiwatt HF
Optic	double parabolic louvre
Colour	RAL 9006 structure
Order quantity	max. 20 numbers

VDU application suitable acc. to European Standards EN 12464-1

Version	Article Code	Price	Dimensions (LxWxH)
2 x 28/54 Watt	<b>650.682.54.3-18</b>	<b>209 €</b>	1236x146x53 mm
1 x 35/49/80 Watt	<b>650.681.80.3-18</b>	<b>209 €</b>	1536x146x53 mm

### SL 650 – Surface mounted luminaire with frosted acrylic diffuser



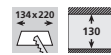
Description	
Lamp	T5
Socket	G5
Ballast	Multiwatt HF
Optic	frosted acrylic diffuser
Colour	RAL 9006 structure
Order quantity	max. 20 numbers

Version	Article Code	Price	Dimensions (LxWxH)
2 x 28/54 Watt	<b>650.692.54.3-18</b>	<b>199 €</b>	1236x146x53 mm
1 x 35/49/80 Watt	<b>650.691.80.3-18</b>	<b>199 €</b>	1536x146x53 mm

# Retail Lighting

## Einleuchtende Vorteile:

- High output reflectors with spherical facets (excepting EB 10)
- Interchangeable reflector technology
- Available beam angles spot - 2 x 6°, medium - 2 x 12°, flood - 2 x 24°
- Homogeneous light distribution
- Natural colour rendering
- Die-cast aluminium housing



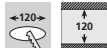
**EB 10**  
Recessed light



Description	
Lamp	HIT-DE
Socket	RX7s
Ballast	high-frequency
Colour	RAL 9006 structure
Outer dimension	145 x 230 mm
Order quantity	max. 20 numbers

Version	Flood - 2 x 44°	Price
70 Watt	<b>10.154.70.23-18</b>	<b>154 €</b>

If you require the track light in white (RAL 9016 structure) please use "-10" instead of "-18".



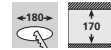
**EB 12**  
Recessed light



Description	
Lamp	HIT-TC-CE
Socket/Ballast	G8,5 / HF
Colour	RAL 9006 structure
Diameter	ø 128 mm
Order quantity	max. 20 numbers

Version	Spot - 2 x 6°	Medium - 2 x 12°	Flood - 2 x 24°	Price
35 Watt	<b>12.154.35.23-18</b>	<b>12.164.35.23-18</b>	<b>12.174.35.23-18</b>	<b>176 €</b>
70 Watt	<b>12.154.70.23-18</b>	<b>12.164.70.23-18</b>	<b>12.174.70.23-18</b>	<b>176 €</b>

If you require the track light in white (RAL 9016 structure) please use "-10" instead of "-18".



**EB 18**  
Recessed light



Description	
Lamp	HIT-CE
Socket/Ballast	G12 / HF
Colour	RAL 9006 structure
Diameter	ø 188 mm
Order quantity	max. 20 numbers

Version	Spot - 2 x 6°	Medium - 2 x 12°	Flood - 2 x 24°	Price
70 Watt	<b>18.154.70.23-18</b>	<b>18.164.70.23-18</b>	<b>18.174.70.23-18</b>	<b>187 €</b>
150 Watt	<b>18.154.15.23-18</b>	<b>18.164.15.23-18</b>	<b>18.174.15.23-18</b>	<b>221 €</b>

If you require the track light in white (RAL 9016 structure) please use "-10" instead of "-18".

## AS 13 – Track light



Description	
Lamp	HIT-TC-CE
Socket/Ballast	G8,5 / HF
Colour	RAL 9006 structure
Dimensions (LxWxH)	165 x 100 x 190 mm
Order quantity	max. 20 numbers

Version	Spot - 2 x 6°	Medium - 2 x 12°	Flood - 2 x 24°	Price
35 Watt	<b>13.453.35.23-18</b>	<b>13.463.35.23-18</b>	<b>13.473.35.23-18</b>	<b>203 €</b>
70 Watt	<b>13.453.70.23-18</b>	<b>13.463.70.23-18</b>	<b>13.473.70.23-18</b>	<b>203 €</b>

If you require the track light in white (RAL 9016 structure) please use "-10" instead of "-18".

## AS 19 – Track light



Description	
Lamp	HIT-CE
Socket/Ballast	G12 / HF
Colour	RAL 9006 structure
Dimensions (LxWxH)	165 x 155 x 225 mm
Order quantity	max. 20 numbers

Version	Spot - 2 x 6°	Medium - 2 x 12°	Flood - 2 x 24°	Price
35 Watt	<b>19.453.35.23-18</b>	<b>19.463.35.23-18</b>	<b>19.473.35.23-18</b>	<b>223 €</b>
70 Watt	<b>19.453.70.23-18</b>	<b>19.463.70.23-18</b>	<b>19.473.70.23-18</b>	<b>223 €</b>

If you require the track light in white (RAL 9016 structure) please use "-10" instead of "-18".

# General Lighting



## DM 190

Square modular recessed downlight



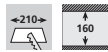
### Description

Lamp	TC-DEL/TEL
Socket	G24q
Ballast	high-frequency
Outer dimension	190 mm
Ceiling cut-out	175 mm +/- 2 mm
Order quantity	max. 50 numbers

Version	Article Code	Price
2 x 18 Watt	<b>190.52.18.53M</b>	<b>133 €</b>

### Einleuchtende Vorteile:

- Reflectors made of metalised pure aluminium (Al 99,98)
- Modular retrofittable glass accessories
- Modular retrofittable gear boxes
- 5-pole though-wiring
- Quick-release mounting springs



## DM 225

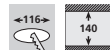
Square modular recessed downlight



### Description

Lamp	TC-DEL/TEL
Socket	G24q
Ballast	high-frequency
Outer dimension	226 mm
Ceiling cut-out	210 mm +/- 2 mm
Order quantity	max. 50 numbers

Version	Article Code	Price
2 x 26 Watt	<b>225.52.26.53M</b>	<b>143 €</b>



## DL 125

Round modular recessed downlight



### Description

Lamp	TC-DEL
Socket	G24q
Ballast	high-frequency
Diameter	125 mm
Ceiling cut-out	116 mm +/- 2 mm
Order quantity	max. 50 numbers

Version	1 x 13 Watt	1 x 18 Watt	Price
Article Code	<b>125.51.13.53</b>	<b>125.51.18.53</b>	<b>117 €</b>



## DL 185

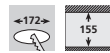
Round modular recessed downlight



### Description

Lamp	TC-DEL
Socket	G24q
Ballast	high-frequency
Diameter	185 mm
Ceiling cut-out	172 mm +/- 2 mm
Order quantity	max. 50 numbers

Version	Article Code	Price
2 x 18 Watt	<b>185.72.18.53</b>	<b>133 €</b>



## DL 185

Round modular recessed downlight



### Description

Lamp	TC-DEL
Socket	G24q
Ballast	high-frequency
Diameter	185 mm
Ceiling cut-out	172 mm +/- 2 mm
Order quantity	max. 50 numbers

Version	Article Code	Price
2 x 18 Watt	<b>185.52.18.53</b>	<b>133 €</b>

**DL 220**  
Round modular recessed downlight



Description	
Lamp	TC-DEL
Socket	G24q
Ballast	high-frequency
Diameter	220 mm
Ceiling cut-out	206 mm +/- 2 mm
Order quantity	max. 50 numbers

Version	Article Code	Price
2 x 18 Watt	<b>220.72.18.53</b>	<b>143 €</b>

**DL 220**  
Round modular recessed downlight



Description	
Lamp	TC-DEL
Socket	G24q
Ballast	high-frequency
Diameter	220 mm
Ceiling cut-out	206 mm +/- 2 mm
Order quantity	max. 50 numbers

Version	Article Code	Price
2 x 26 Watt	<b>220.52.26.53</b>	<b>143 €</b>

**DL 255**  
Round modular recessed downlight



Description	
Lamp	TC-DEL
Socket	G24q
Ballast	high-frequency
Diameter	255 mm
Ceiling cut-out	238 mm +/- 2 mm
Order quantity	max. 50 numbers

Version	Article Code	Price
2 x 26 Watt	<b>255.72.26.53</b>	<b>151 €</b>

**AM 220 – Round modular surface mounted downlight**



Description	
Lamp	TC-DEL/-TEL
Socket	G24q
Ballast	high-frequency
Diameter	220 mm
Height	130 mm
Order quantity	max. 50 numbers

Version	Article Code	Price
2 x 18 Watt	<b>220.762.18.53</b>	<b>160 €</b>

**AM 255 – Round modular surface mounted downlight**



Description	
Lamp	TC-DEL
Socket	G24q
Ballast	high-frequency
Diameter	255 mm
Height	130 mm
Order quantity	max. 50 numbers

Version	Article Code	Price
2 x 26 Watt	<b>255.762.26.53</b>	<b>166 €</b>

**Frosted glass pane with 10 mm clear outer rim**



Version	Bestellm.	Article Code	Price
for DL 185	50 numbers	<b>185.903</b>	<b>35 €</b>
for DL 220	50 numbers	<b>220.903</b>	<b>40 €</b>
for DL 255	50 numbers	<b>255.903</b>	<b>44 €</b>

**Frosted safety glass pane**



Version	Order qua.	Article Code	Price
for DL 185	50 numbers	<b>185.900</b>	<b>35 €</b>
for DL 220	50 numbers	<b>220.900</b>	<b>40 €</b>
for DL 255	50 numbers	<b>255.900</b>	<b>44 €</b>